

Board Pro *Plus*

Table Saw Blade

KANEFUSA

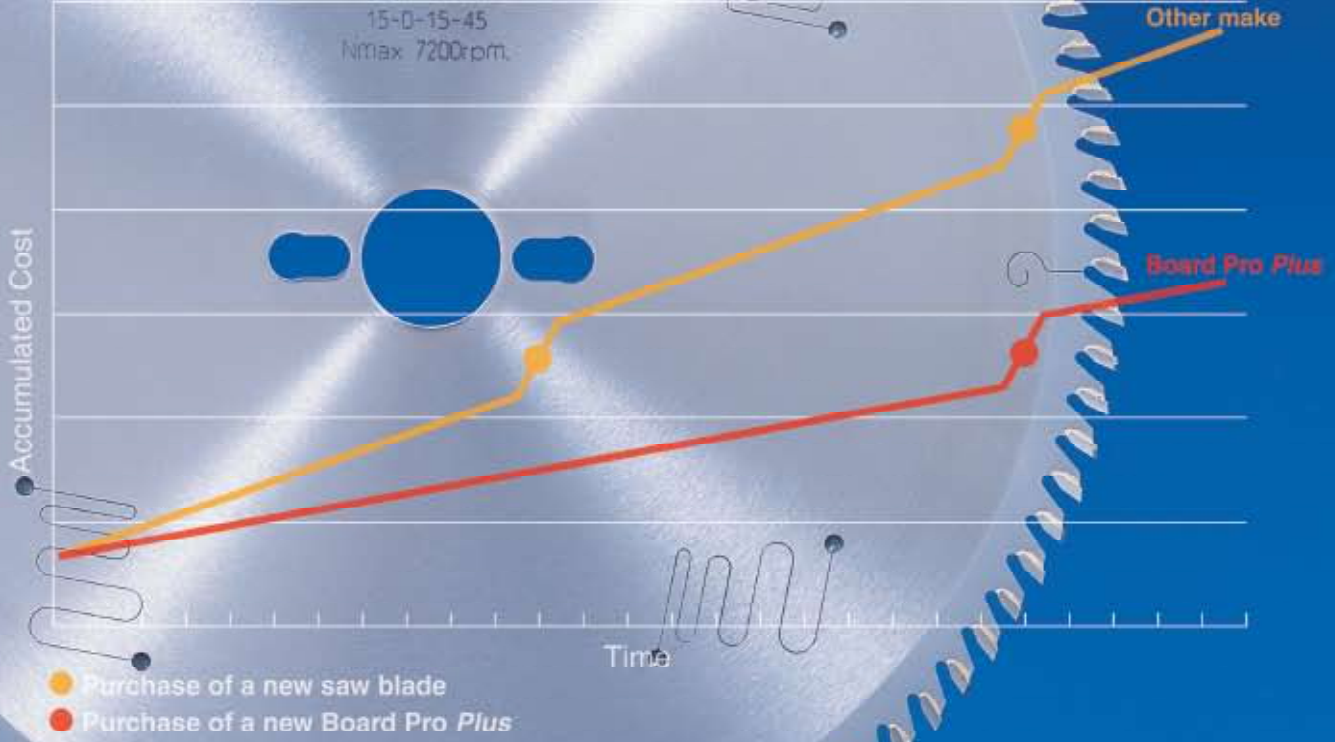
New

18-22.05.2009

LIGNA

HANNOVER - GERMANY
Weltmesse für die Forst- und Holzwirtschaft
World Fair for the forestry and Wood Industries
www.ligna.de

Tooling Cost Comparison



Save money: use Board Pro *Plus*

Kanefusa - A New Dimension of Performance



JQA-QM3710



JQA-EM3137
Head Office
Factory

Specifications and appearance are subject to change without notice.
Photographs and illustrations may vary from actual products.

0-53-1


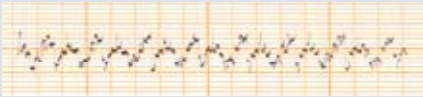
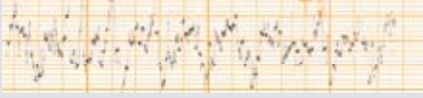

[Class] [Article] [Revision]

Board Pro *Plus*

A Table saw blade for cutting particle board and MDF, backed with melamine, HPL and other hard lamination.

Quality Features for More User Value

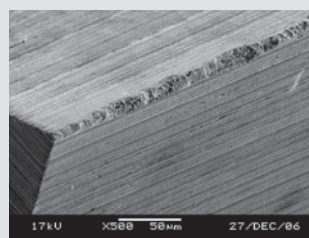
1 Run out in comparison to other quality brands. Board Pro *Plus* runs **very straight**

| | Run out left side [mm] | Run out right side [mm] | Edge roughness Ra [μ m] | Edge roughness Rmax [μ m] |
|---|------------------------|-------------------------|------------------------------|--------------------------------|
| Board Pro <i>Plus</i>  | 0.05 | 0.04 | 0.083 | 0.718 |
| Competitor A (German manufacturer)  | 0.08 | 0.08 | 0.170 | 1.799 |
| Competitor B (German manufacturer)  | 0.07 | 0.08 | 0.306 | 4.417 |
| Competitor C (German manufacturer)  | 0.11 | 0.11 | 0.197 | 2.152 |

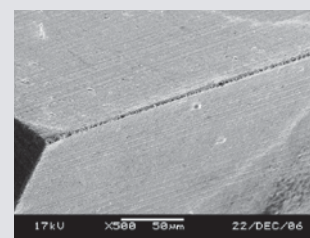
2 Polymer injected laser slots dampen vibrations. Board Pro *Plus* saw blades **cut straighter** and **run quieter** than most other makes.

3 The Board Pro *Plus* saw blade is tipped with a newly developed Tungsten Carbide grade. Field tests in various countries have proved its **superior performance** in comparison to other quality brands. On average, its life was double that of others.

4 Compared with other quality saws, the cutting edge of Board Pro *Plus* is of superior sharpness, leading to a **better cut quality** and a **longer life**.

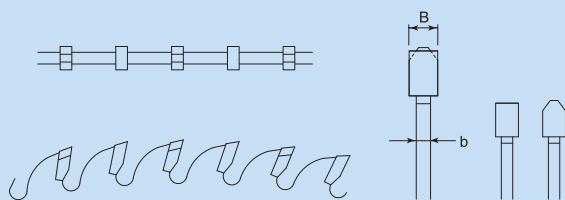


Other make



Kanefusa

D-Type Tooth Geometry



| Order no. | D | B | b | d | z | Type | Pin holes |
|--------------|-----|-----|-----|----|----|------|-----------|
| 691-E605-403 | 300 | 3.2 | 2.2 | 30 | 96 | D | 2/7/42 |